



MAGIC



LOA:	52' (15.85m)	Delivery/Model	2018
Beam:	22' (6.71m)	Year:	
Max Draft:	4' 9" (1.42m)	Model:	PC52
Clearance:	25' (7.62m)	Builder:	HORIZON
Tonnage:	30.00	Type:	Catamaran Cruiser
Speed:	18 Knots 21 Knots	Staterooms:	3
Flag:	US	Fuel Cap:	800 Gal
Location:	Fort Lauderdale, Florida United States	Water Cap:	250 Gal
VAT Paid:	US Duty Paid	Engines:	2x, Cummins, QSB 6.7, 550 HP
		Price:	\$1,695,000 USD

Additional Specifications For MAGIC:

LOA:	52' (15.85m)	Delivery/Model	2018
Beam:	22' (6.71m)	Year:	
Min Draft:	4' 6" (1.37m)	Year Built:	2017
Max Draft:	4' 9" (1.42m)	Builder:	HORIZON
Hull Material:	Advanced Composites	Model:	PC52
Superstructure:	GRP	Type:	Catamaran Cruiser
Hull Config:	Catamaran	Top:	Hardtop
Tonnage:	30.00	Engines:	550 HP, Twin, 2018, Inboard, Diesel, Cummins, QSB 6.7, 740hrs / 740hrs
Range At Cruise	400	Staterooms:	3
Speed:		Sleeps:	6
Range At Max		Heads:	2
Speed:	Cruising 18 Knots	Captain Cabin:	No
	Max 21 Knots	Classifications:	
Int Designer:	Leigh Ford	MCA: ISM:	
Ext Designer:	JC Espinosa		
Fuel Capacity:	800 Gal		
Water Capacity:	250 Gal		
Holding Tank:	70 Gal		
Flag:	US		
Location:	Fort Lauderdale, Florida United States		
Price:	\$1,695,000 USD		
Tax Status:	US Duty Paid		

FULL SPEC AND UPGRADES

Deck & Exterior

White Gelcoat finish for hull above water line, exterior deck and superstructure.

One-piece hull lamination and longitudinal girders

Hull is built with licensed process SCRIMP™ for improved strength and less weight

High density foam cored construction bottom and topsides

Solid fiberglass laminate stem, keel.

Main Engine girders with high density foam coring

Deck & superstructure foam cored reinforcement for rigidity

International anti-fouling bottom paint, w/ anti-osmosis treatment

Nonskid main deck sides and Foredeck

Teak covered aft deck & Steps.

S/S rub rail around hull deck joint.

Heavy-duty S/S #316 1-1/4" handrail w/1" (stanchions)

10 Mooring cleats on deck.

Flag staff on back of flybridge.

Fuel and water inlets.

Locker for 24V anchor windlass.

50KG Delta anchor.

175ft of high tensile 3/8" chain and 150ft warp.

Roller for anchor.

Fresh Water Washdown in Bow Locker

Two bow storage lockers with access through flush FRP deck hatches.

2 x Deck hatches over Salon with blinds & screens.

2 x Deck hatches over Master and VIP with blinds & screens

Engine access through manual deck hatches in cockpit floor with manual struts.

Two large hull side frameless window.

Six oval Stainless opening portholes.

S/S rail around boat deck
Foredeck Cushions with Stamoid Cover
FRP Curved seat with cushions at aft. deck.
Teak cockpit table.
Comfortable stairs from aft deck to flybridge.
Two steps down to dive/swim platform.
Cockpit lockers for storage.
2 side boarding doors
Second location bases for aft. deck table
S/S transom door with Horizon Logo
Dimmer switch for Aft. deck ceiling lighting
Built-in shower with hot/cold water.
Swim ladder on STBD side.
S/S safety rail on swim platform
Aft Swim Platform Rails with Fish Cutting Table
LED deck Lighting
Cockpit Lighting
Aft Deck Bar with Scotsman Ice-Maker, Dometic refrigerator and Sink

FLYBRIDGE

Non-skid flybridge cambered deck with ample drainage.
Infinity fitted Carpet on Flybridge
Helm station with stainless wheel and instrument console.
Single STIDD helm chair
FRP module bar with sink, with hot and cold water.
Dometic fridge in bar.
Teak coffee table with seating.
Corian Table Top with 4 x Bar Stools

Sunning bed/ Bench Seat stb side of helm console with cushions

Ample locker space for storage.

Fusion radio with Sub-woofer and 4 water proof speakers.

E1000 Full Hydraulic Steelhead Crane

Dimmer switch for F/B ceiling lighting

Hatch on Hardtop

Air-Conditioning on Flybridge

Search Light

F/B Windshield with wiper and washer

Sea Crylic aft Panels

Solid Glass side Panels

2 x 7616 Garmin Screens

Garmin Auto-Pilot

Garmin Wind Indicator

Garmin 48 Mile HD Radar

Fish Finder and Depth sounder

Controls for ship's horn on F/B helm station.

Bilge pump monitor and control on F/B helm station.

Ritchie 4-1/2" compass on F/B helm station.

Monitoring system for tanks

Engine Room and Equipment:

Twin QSB 6.7 550 H.P. Cummins Engines

Sound and heat insulated compartments

Air Intakes with Moisture eliminators for P&S.

DC 24Volt lights.

One AC outlet in each Engine room.

AC power supply from Cummins 17KW generator / shore power.

Selector switch for AC power supply.

Remote panel for generator in Salon.

24v AGM Batteries for engine & generator start up.

24v AGM Batteries for ship's service power.

BEP battery switch.

One Victron 100amp battery charger for all batteries.

One Victron inverter 3.0 KW.

Glendenning Cable Master with 70ft shore power and 50Amp connector.

Dual Back lit Racor filters for engines.

Single Racor Filter for Generator

One oil change pump for engines, generator and Gearboxes.

One Seafire automatic/manual fire extinguisher in engine room.

Fresh Water System

270 Gal of water tank integral to hull.

Color coded piping for easy identification.

Marine grade lines for fresh water system

One 17 Gal/110V or 220V water heater.

Two High volume Headhunter 24V fresh water pump with accumulator tank.

Fresh water Washdown for anchor.

Fresh Water Washdown on Aft Deck.

Sanitary & Bilge System

2 x 30 Gal of holding tank integral to hull

Electric fresh water flush Headhunter toilets,

Sealand pumps with Y valve for automatic discharge. and dock side pump out (2).

4x electric 24V bilge pumps with separate High level bilge water alarms.

Interior Design and Equipment's:

Three Stateroom two Head layout

Master takes up Starboard side with En-Suite Bathroom

Queen Bed in Master and VIP

Twin Bed in 3rd cabin

White Washed Teak Hardwood Flooring

Tempered safety glass windows.

Soft furnishings including roman blinds and accent wood finishing.

Corian countertops.

Fabric blind over large windows.

Portlights for ventilation.

Basin, cabinets and mirrors.

Walk-in separate showers.

Linen Cupboard inboard of the M/S shower.

Lights in Overhead.

Extractor fan in Showers.

Salon

Salon seating covered in fabric.

Wood Hi-Lo Dining table.

Cabinet for Glasses.

Salon 48" Samsung TV with Storage Cabinets.

Two hatches with screen on top of salon roof

Galley

4 Burner Electric cooktop

GE Avantium Oven with Microwave

Fischer Paykel Dishwasher drawer

Fridge with 2 freezer drawers and Icemaker

Wine Enthusiast Dual Zone Wine Cooler

Wood floor.

Corian counter tops.

Double sinks with Faucet and Garbage Disposal.

Custom wooden carpentry for galley, cupboards and counters.

Cutlery & crockery drawers.

Pot drawer & spice drawers.

Additional storage drawers and cupboards.

Under counter trash drawer.

Additional Items

Stern docking lights(2)

4 Function Yacht Controller

Side Power 13.5 H.P. Bow Thruster

4 Underwater Lights

700gal/day 24v Spectra Water-maker

Sea Crylic Cover over Flybridge Stairs

AFT DECK 2



AFT DECK 1



The Powercat Company LLC
2525 Marina Bay Drive West
Suite 202
Fort Lauderdale Florida
33312 United States

Jason Ford
M: (954) 552-0868
jason@powercatco.com
www.horizonpowercatamarans.com

MAGIC

FLYBRIDGE 3



FLYBRIDGE 2

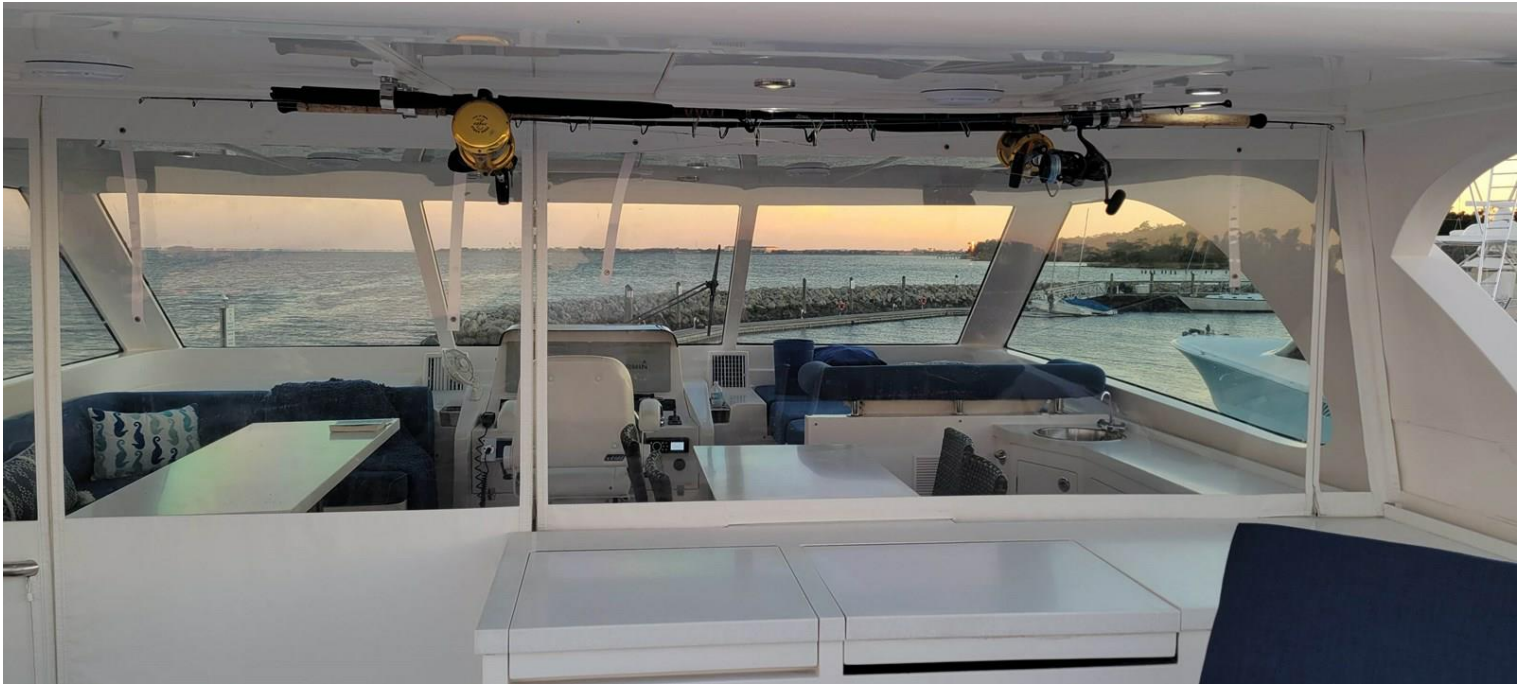


The Powercat Company LLC
2525 Marina Bay Drive West
Suite 202
Fort Lauderdale Florida
33312 United States

Jason Ford
M: (954) 552-0868
jason@powercatco.com
www.horizonpowercatamarans.com

MAGIC

FLYBRIDGE 1



SALON 1



The Powercat Company LLC
2525 Marina Bay Drive West
Suite 202
Fort Lauderdale Florida
33312 United States

Jason Ford
M: (954) 552-0868
jason@powercatco.com
www.horizonpowercatamarans.com

MAGIC

SALON 2



SALON LOOKING TO PORT



The Powercat Company LLC
2525 Marina Bay Drive West
Suite 202
Fort Lauderdale Florida
33312 United States

Jason Ford
M: (954) 552-0868
jason@powercatco.com
www.horizonpowercatamarans.com

MAGIC

SALON GALLEY LOOKING AFT



MASTER 1



The Powercat Company LLC
2525 Marina Bay Drive West
Suite 202
Fort Lauderdale Florida
33312 United States

Jason Ford
M: (954) 552-0868
jason@powercatco.com
www.horizonpowercatamarans.com

MAGIC

MASTER 2



VIP 1



The Powercat Company LLC
2525 Marina Bay Drive West
Suite 202
Fort Lauderdale Florida
33312 United States

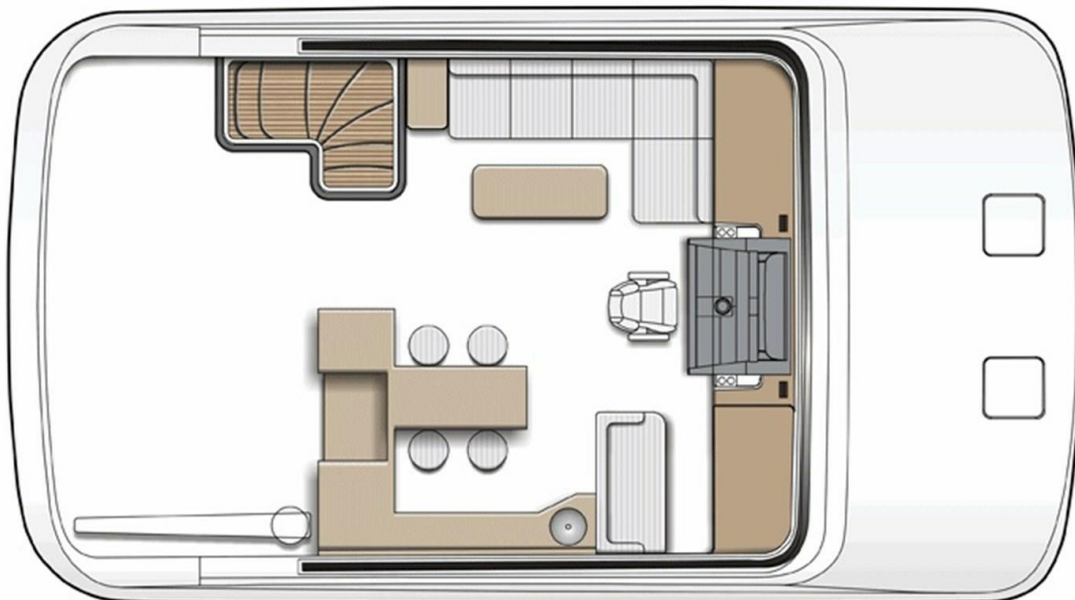
Jason Ford
M: (954) 552-0868
jason@powercatco.com
www.horizonpowercatamarans.com

MAGIC

PROFILE



FLYBRIDGE



The Powercat Company LLC
2525 Marina Bay Drive West
Suite 202
Fort Lauderdale Florida
33312 United States

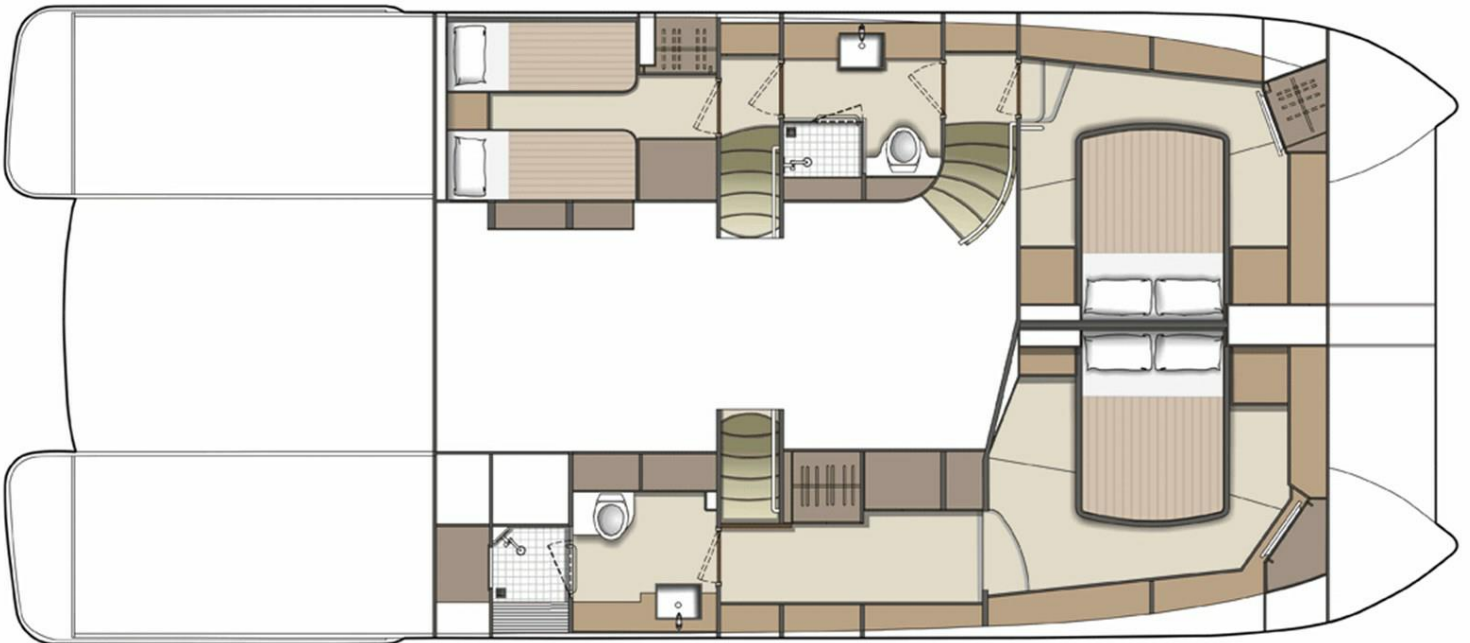
Jason Ford
M: (954) 552-0868
jason@powercatco.com
www.horizonpowercatamarans.com

MAGIC

MAIN DECK



LOWER DECK



The Powercat Company LLC
2525 Marina Bay Drive West
Suite 202
Fort Lauderdale Florida
33312 United States

Jason Ford
M: (954) 552-0868
jason@powercatco.com
www.horizonpowercatamarans.com

MAGIC