



SALUS



LOA:	61' 7" (18.77m)	Delivery/Model Year:	2022
Beam:	24' 6" (7.47m)	Model:	PC60
Max Draft:	4' 9" (1.45m)	Builder:	HORIZON
Tonnage:	0.00	Type:	Motor Yacht
Speed:		Staterooms:	3
Flag:	USA	Fuel Cap:	1000 Gal
Location:	Coral Bay, Saint John US Virgin Islands	Water Cap:	250 Gal
VAT Paid:	US Duty Paid	Engines:	2x, Cummins, QSM11, 705 HP
		Price:	\$3,250,000 USD

Additional Specifications For SALUS:

LOA:	61' 7" (18.77m)	Delivery/Model	2022
Beam:	24' 6" (7.47m)	Year:	
Max Draft:	4' 9" (1.45m)	Year Built:	2022
Hull Material:	Fiberglass	Builder:	HORIZON
Superstructure:	GRP	Model:	PC60
Hull Config:	Catamaran	Type:	Motor Yacht
Range At Cruise		Engines:	705 HP, Twin, Inboard, Diesel,
Speed:			Cummins, QSM11,
Range At Max		Staterooms:	3
Speed:		Sleeps:	6
Fuel Capacity:	1000 Gal	Crew Quarters:	1
Water Capacity:	250 Gal	Captain Cabin:	No
Flag:	USA	Classifications:	
Location:	Coral Bay, Saint John US Virgin Islands	MCA: ISM:	
Price:	\$3,250,000 USD		
Tax Status:	US Duty Paid		

Overview

Salus is a stunning 60-foot power catamaran crafted by Horizon in 2022 and is found to be in bristol condition. This luxurious vessel boasts a lavish main deck Master suite, a VIP suite, and a side-by-side double cabin that in total can accommodate up to 6 guests plus a crew cabin for 2. The flybridge offers a climate-controlled helm station, a wet bar, an open-air dining area, and the option to relax on outdoor loungers on the spacious sundeck. Salus offers powerful performance with twin Cummins QSM11 diesel engines providing 705hp each, along with an Onan 17kW generator coupled with the Horizon Victron energy solar package. Equipped with Garmin navigation electronics, swim platform with stainless steel rails on each hull, and a bow and stern thruster, Salus is ready for a new owner to indulge in the extraordinary experience of owning this impressive power catamaran.

Exterior Deck and Equipment

- Gunwale with external rub rail
- Fiberglass cap rail
- Mooring cleats with hawse pipes in gunwale
- 24V anchor windlass with foot switches concealed in a locker
- Anchor windlass control at flybridge
- Roller and S/S chain stopper for anchor
- Heavy-duty S/S handrail. Top rail 1-1/2", stanchions 1-1/4" and mid rail 1"
- Teak pulpit seats at bow
- Deck hatch for access to 63kg S/S anchor 200 ft of high tensile 3/8" chain plus 100ft mooring rope
- Fresh water at chain locker
- Opening portlights (x6)
- Hull side frameless and flush mounted seam windows tinted and tempered glass for master & VIP cabin
- Deck hatches (x2) with blinds & screens
- Stainless steel framed salon door with 7 feet opening
- Port and starboard sides boarding door
- Non-skid deck
- Self-draining aft deck
- FRP curved seat with cushions
- Satin finished fixed height wood cockpit table
- Large, curved steps (x2) down to large dive/swim platform
- Manual swim ladder (x2)
- Cockpit lockers for storage
- Cockpit LED down lights
- Courtesy lights
- Hot and cold freshwater shower
- Fresh water deck wash tap and dock inlet at portside
- Canvas covers for helm console, Stidd helm chair, FRP lounge seating & table, aft cockpit seating, and cover for aft cockpit table
- Comfortable curved stairway up to flybridge from aft deck
- Recessed fuel and water inlets
- Swim platform with S/S rails one on each hull
- Dimmer switch for aft deck ceiling lighting
- Dimmer switch for three light above aft deck table
- Pre-wire for stern LED nameplate
- Locks on 3x storage lockers on aft deck
- FRP aft deck bar with FRP top, basin, fridge
- Install OS Burnewinn fishing rod holders 5 on stern
- 30 amp 12 volt deep drop electric reel plugs on port and starboard side

Flybridge and Boat Deck

- Non-skid flybridge cambered deck with ample drainage
- Navigation LED lights
- Ample locker space for storage
- Wet bar with sink, hot and cold water, fridge
- Indirect lighting under bar counter
- Luxurious lounge seating with one step higher
- Satin finished teak hi/lo and sliding table
- Helm station with S/S wheel
- Stidd pilot chair
- Instrument console with engine controls, chart plotters instrument monitors and panels, fuel tank monitoring system
- Remote controls for spotlight and ship's horn
- Bilge pump monitors and controls
- Compass
- Comfortable stairs for access to aft deck with stainless handrails
- Hard top ceiling lights
- Hardtop reinforced for nav gear to be mounted on top
- Steelhead E1000 hydraulic crane for tender on flybridge
- S/S flagpole on stern
- Double bench seat on port side
- Double bench seat on STBD with slide out panel and cushion for daybed
- One flood light on the radar arch
- Dimmer switch for F/B ceiling lighting
- Air conditioning on flybridge (2 outlets)
- One hatch on hardtop, above console
- One outlet near davit and cut FRP for single spigot flush mount washdown box
- F/B bar upgrade from FRP to Corian top

Engine Propulsion and Steering System

- Twin Cummins QSM11 705 HP engines
- Engine hours: 470 (Feb 2024)
- Dual Racor filters in each engine room
- S/S shafts Aquamet HS 22# or equivalent
- High performance S class propellers
- Shaft and rudder packing glands with maintenance free Tides seals
- Stainless rudder with zinc plates
- Bow thruster SE210 13.15hp (x1)
- Stern thruster
- Hypro Electronic Command Steering System
- Underwater exhaust system with bypass and mufflers
- Install fuel pump operation switch with solenoid valve in engine
- Manual adjustable trimtab at stern

Engine Room and Equipment

- Wireless yacht controller
- Spot Zero water filtration
- Fuel polisher
- 1000 GPD watermaker
- Sound and heat insulated compartments
- Ventilation system with moisture eliminators
- 17 kW (60Hz) Onan generator with sound shield and air water separator
- Generator hours: 795 (Feb 2024)
- Engine access through deck hatches in cockpit floor
- DC Lights
- Automatic fire extinguisher outlets
- High water bilge pumps with alarms
- Oil change pump system for engines, gears, and generators
- Marine Air – central air conditioning for each cabins and salon
- Air-conditioning self-cleaning system

Electrical System

- 110V or 220V electrical supply from generator/shore power/solar inverter
- Shore power connector 50amp inlet*1 with one 75' cable master 50A
- Automatic transfer switch for AC power supply
- Color-coded wiring for easy identification
- Premium DC distribution board with switches, voltmeter and amp meter
- Remote panel for generator with auto start
- Four 210Ah AGM batteries for ship's DC 24V service power
- Premium AC panel with switches 110/220VAC, 50A dock inlet
- Navigation light selection panel
- Fresh, black water & diesel tank gauges
- Four 210Ah AGM start batteries for engines/generator
- 16KW inverter with solar charger
- Vimar switches for lighting switches and receptacles
- Outlets in salon, bar, galley, cabins, flybridge, aft deck, and engine room
- AC and DC distribution panels
- Smoke detector in each zone

Navigation and Instrumentation

- 2 x Garmin 8622 chart plotters
- Garmin 48" 48mile open array radar system
- Garmin Autopilot System
- Garmin wind/speed/temp/depth transducers
- Garmin VHF at flybridge (with built-in loudhailer) and interior navigation station
- Garmin AIS

Mechanical System

- Headhunter fresh water Royal Flush Bravo marine toilets in master and VIP head, and Espresso toilets for the rest with back-up freshwater pump
- Washer and separate dryer including laundry cabinets and iron board
- 70 Gallon holding tanks (x2), Y valve for overboard discharge or dock side pump out
- 250 Gallon water tank
- Water and fuel tank integral to hull
- Color coded piping for easy identification
- Two-level water bilge alarm
- Electric 24V bilge pumps
- Marine grade lines for freshwater system
- 20 Gallon hot water heater
- Fuel transfer pumps
- High volume AC freshwater pump
- Hot water circulation pump

Salon

- Hardwood flooring
- Tempered safety glass windows
- Luxurious salon sofa covered in fabric
- Soft furnishings including roman blinds
- Fabric headliner with down lights
- Window valance
- Satin varnish wood coffee table
- Satin wood finish on vertical and horizontal surfaces
- Dimmer system for LED ceiling lights in salon

Office (Port of Salon)

- Office desk with chair
- Storage cabinets and drawers

Master Stateroom

- Carpeted and wood flooring
- Soft furnishings including blinds on all side windows
- King size walk around bed with pocket spring mattress
- Reading lights and cabin lights
- Nightstands with cupboard, light switches and outlets
- Headliner with recessed downlights
- Vanity desk with stool in passageway
- Large dressing area with full height closets, cedar lined
- Big scene glass window in cabin and above vanity desk
- Dimmer system for ceiling lights in master cabin

Master Stateroom Head

- Scene window
- Large dual basin, cabinets, overhead lockers, and mirrors
- Luxury walk-in separate shower
- Separate water closet for toilet with basin and cabinets
- Large closets for linens/towels and clothes

VIP Stateroom

- Queen-size bed – semi-walk around
- Carpeted and wood flooring
- Soft furnishings including Roman blind over large oval window
- Luxury pocket spring mattress
- Reading lights, cabin lights
- Nightstands with cupboard, light switches and outlets
- Vanity with mirror and stool
- Closets, cedar-lined
- Fabric headliner with recessed downlights
- En suite bathroom with walk-in shower, head and basin
- Opening port-light*1 in shower room for natural light and ventilation
- Big scene glass window in cabin and head
- Shower seat in Corian

Port Guest Stateroom

- Twin side-by-side beds
- Carpeted and wood flooring
- Soft furnishings including Roman blind over port light
- Luxury foam mattress
- Reading lights, cabin lights
- Opening port light (2 in hull side)
- Nightstand with drawers, light switches and outlets
- Fabric headliner with recessed downlights
- En suite bathroom with walk-in shower, head and basin
- Opening port-light*1 in bathroom for natural light and ventilation
- Pocket door from salon to port guest cabin
- Pocket door from the laundry are to the crew room stbd side

Bar

- Corian bar counter
- Storage for drinks bottles and glasses
- Storage cupboards
- Overhead lights
- Main control AC/DC panel

Galley

- Corian countertops and backsplashes
- Miele KM6365 Flush cooktop
- Zephyr Twister Extractor over cooktop
- Miele H6780BP 30" Convection oven
- Miele (KFNF9955IDE) French Door w/ panel ready fridge
- Fisher & Paykel (DD24STI9_N) panel ready dishwasher
- Cutlery and crockery drawers
- Pot and pan drawer & spice cupboard
- Additional storage drawers and cupboards
- Double sinks with Insinkerator PRO750 disposal w/ air switch
- Under counter trash drawer
- Wine cooler

Entertainment and Stereo System

- Flybridge Fusion Marine Stereo (x1) and speakers (x4)
- Salon LCD TV with sound system
- Aft deck Fusion Marine Stereo (x1) and speakers (x2)
- Master cabin LCD TV with Fusion Marine Stereo (x1) and SM speakers (x2)
- VIP cabin LCD TV with Fusion Marine Stereo (x1) and SM speakers (x2)
- Starlink satellite internet system

Tender

- 15' AB Inflatable, 70hp

Options

Deck

- Synthetic Plas deck - aft deck and stairs
- F/B aft deck S/S rail around boat deck

Flybridge

- Extra aft fixed sunshade with stainless posts and lights
- Manship hatch (with white opaque) on hardtop (without screen), above console
- Three panes of glass on FB windshield and 3 wipers and washers plus two FRP mullions
- Sea Crylic aft panels with zip up door, and side panels with zip up window

Navigation and Audio Options

- Extensive Garmin Nav suite
- Extensive Audio package throughout

Engine Room / Electrical

- 4 x Underwater lights
- 8 x Solar panels
- 1000 AMP 24v Lithium package
- Victron energy inverters with automatic generator shorepower transfer

Interior Layout

- Custom made bar stool with S/S post in galley (3 unit)

Plumbing

- Additional standby freshwater pump
- 1000gal/day Spectra 24v watermaker

Items Added During Build

- Upgrade wiring in salon and master for electric blinds
- 3 x Bar Stools on flybridge
- Install flybridge chest freezer
- Add stainless frame on master cabin shower surfboard
- Install O/S tile in master and VIP showers
- Teak bar front on flybridge
- Upgrade to Stratum on aft deck bar
- Upgrade flybridge table to Stratum insert with high gloss surround
- Salon coffee table convert to dining table in high gloss
- Stainless steel end caps on railings
- Custom upgrade to high gloss areas around the yacht
- Upgrade to waterfall on the Corian in galley
- Frosted glass in hallway to VIP shower
- Upgrade to Miele wine cooler instead of Summit
- Upgrade to leather in salon ceiling
- Upgrade headboard in VIP
- Custom Corian in guest entryway
- Upgraded outdoor fabric
- Dockmate wireless docking system
- Zeno mattress
- V-Kool 3 FWD in FB and master bedroom FWD
- Spot Zero
- Salon door blinds
- Aft deck shower
- Upgrade to the 5 blade veem props
- Cell booster
- Burnewiin box of cleats and two rod holders
- Lower aft deck screen
- Windscreen cover over master windows

Salon



Salon Seating



Salon Bar



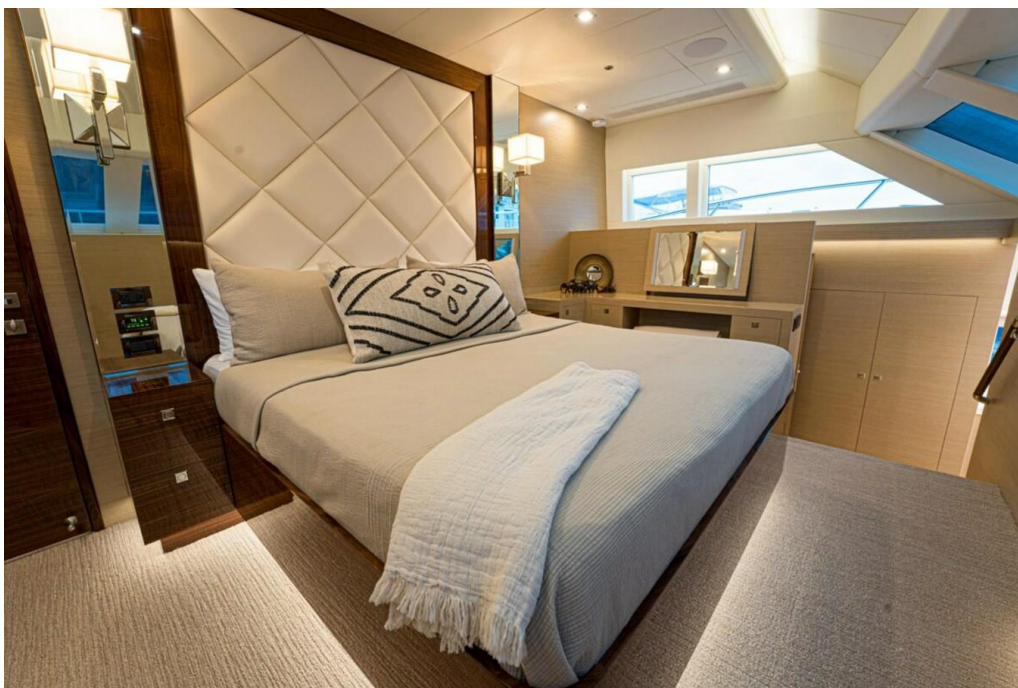
Galley



Galley



Owner Stateroom



Owner Stateroom



Owner Stateroom



Owner Ensuite



Owner Ensuite



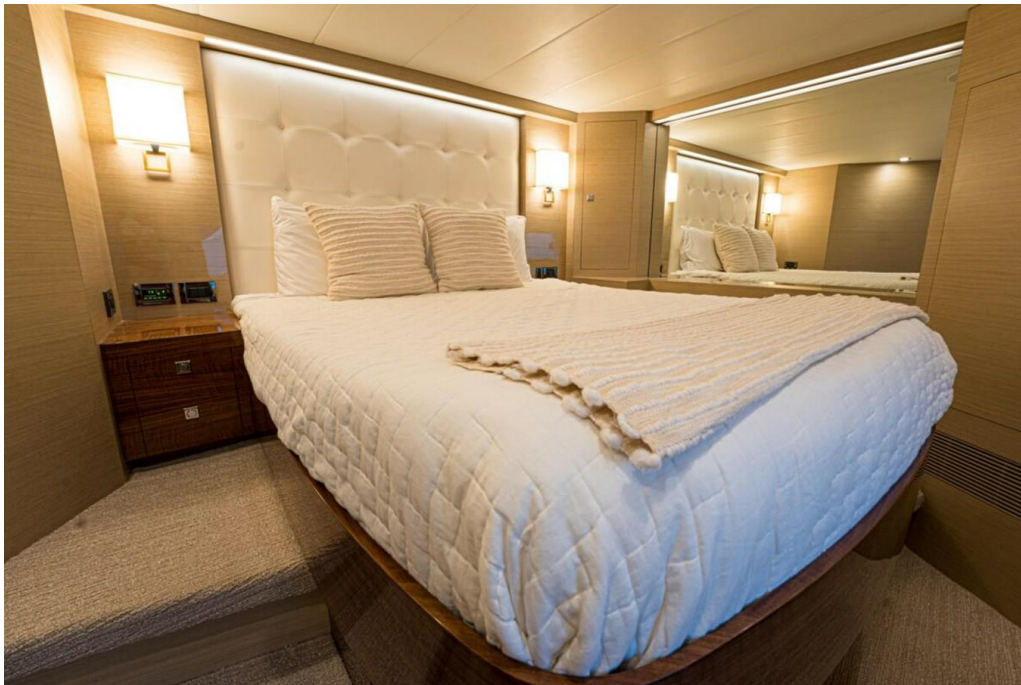
Owner Ensuite



Owner Ensuite



VIP Stateroom



VIP Stateroom



VIP Stateroom



VIP Ensuite



VIP Ensuite



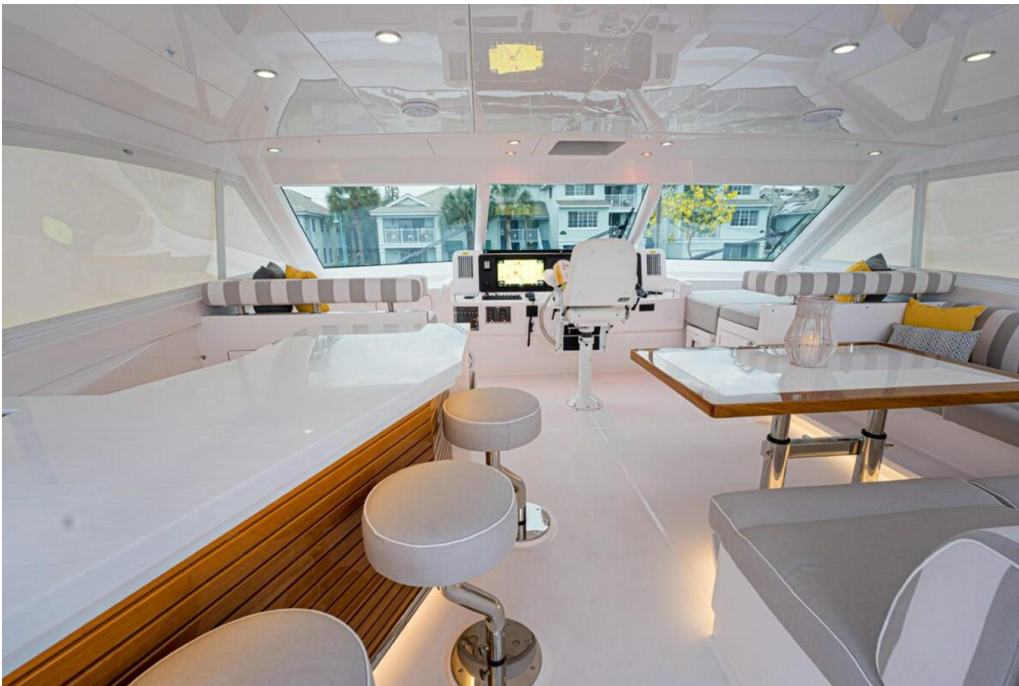
Twin Stateroom



Crew Cabin



Flybridge



Flybridge Seating



Flybridge



Flybridge



Flybridge



Flybridge



Helm



Helm



Side Deck



Aft Deck



Aft Deck



Aft Deck



Aft Deck



Swim Platform



Stern



Starboard Stern



Starboard Bow





The Powercat Company LLC
2525 Marina Bay Drive West
Suite 202
Fort Lauderdale Florida
33312 United States

Jason Ford
M: (954) 552-0868
jason@powercatco.com
www.horizonpowercatamarans.com

SALUS