



## FRUITION



### 2020 HORIZON

<b>LOA:</b>	60' 9" (18.52m)	<b>Build/Model Year:</b>	2019 / 2020
<b>Beam:</b>	24' 6" (7.47m)	<b>Builder:</b>	HORIZON
<b>Min Draft:</b>	4' 10" (1.47m)	<b>Type:</b>	Catamaran
<b>Max Draft:</b>	5' (1.52m)	<b>Price:</b>	\$2,995,000 USD
<b>Speed:</b>	Cruising 18 Knots Max 22 Knots	<b>Location:</b>	Fort Lauderdale, Florida United States
<b>VAT Paid:</b>	US Duty Paid		

### Additional Specifications For FRUITION:

<b>LOA:</b>	60' 9" (18.52m)	<b>Delivery/Model</b>	2020
<b>Beam:</b>	24' 6" (7.47m)	<b>Year:</b>	
<b>Min Draft:</b>	4' 10" (1.47m)	<b>Year Built:</b>	2019
<b>Max Draft:</b>	5' (1.52m)	<b>Builder:</b>	HORIZON
<b>Hull Material:</b>	Advanced Composites	<b>Type:</b>	Catamaran
<b>Hull Config:</b>	Catamaran	<b>Engines:</b>	705 HP, Twin, Inboard, Diesel, Cummins, QSM 11, 660hrs / 660hrs
<b>Hull Designer:</b>	Angelo Lavranos	<b>Staterooms:</b>	3
<b>Deck Material:</b>	Composite Fiberglass	<b>Sleeps:</b>	6
<b>Tonnage:</b>	40	<b>Heads:</b>	3
<b>Range At Cruise</b>	400	<b>Classifications:</b>	
<b>Speed:</b>		<b>MCA:</b>	ISM:
<b>Speed:</b>	Cruising 18 Knots		
	Max 22 Knots		
<b>Int Designer:</b>	LEIGH FORD		
<b>Fuel Capacity:</b>	1000 Gal		
<b>Water Capacity:</b>	250 Gal		
<b>Holding Tank:</b>	80 Gal		
<b>Flag:</b>	Marshall Islands		
<b>Location:</b>	Fort Lauderdale, Florida United States		
<b>Price:</b>	\$2,995,000 USD		
<b>Tax Status:</b>	US Duty Paid		

## **FRUITION SPECIFICATION**

### **Main Structure**

One-piece hull lamination, longitudinal stringers and keel to protect propellers and rudders Solid fiberglass below waterline High-density Divinycell or equivalent foam cored construction above water line Entire hull structure constructed under high vacuum pressure utilizing the patented SCRIMP™ process for higher strength and reduced weight High-density Divinycell or equivalent foam cored deck and superstructure. Entire deck and superstructure constructed under high vacuum pressure utilizing the patented SCRIMP process for higher strength and reduced weight.

White gelcoat finish for hull above water line, exterior decks and furniture Micron CSC 2 coats anti-fouling bottom paint (Nov 2022), and 5 plies anti-osmosis primer treatment.

PropSpeed metal paint for underwater appendages (Nov 2022)

Horizon Yachts style liners and modules with light weight cored wood cabinetry

### **Hull and Deck Exterior General**

Gunwale with external rub rail. Mooring cleats, with hawse pipes in gunwale. Locker for 24V anchor windlass with foot switches

Anchor controls at anchor locker and fly bridge and via dockmate remote and stainless chain stopper for anchor.

Stainless steel safety rails Stainless steel flag pole on stern

Deck hatch for access to 63kg Stainless Delta anchor 300 ft of high tensile 3/8" chain plus 100ft rode Fresh water at chain anchor

Two bow storage lockers with access through flush deck hatches Large deck storage hatch

Two hull side frameless and flush mounted windows. Teardrop tinted and tempered glass

4 x Deck hatches with blinds & screens

Stainless steel framed salon door with 8' opening

2 x side boarding door.

Non-skid deck on Side walk and Foredeck,

Plasdeck on Aft deck, steps to flybridge, cockpit, steps to swim platform and swim platform

Self draining aft deck

FRP Curved seat with cushions

Large Hi Gloss solid wood cockpit table for 8

Two large curved steps down to large dive/swim platforms

Manual swim ladders (2) Cockpit lockers for storage

6' tall Bosun locker below stairs with mounted Shurhold boat cleaning equipment

Cockpit down lights Courtesy lights

4 LED Underwater lights, (blue)

Hot and cold fresh water shower recessed into aft coaming port and starboard

Fresh water for deck wash

Canvas covers for exterior furniture

Aft Deck Bar with Scotsman Icemaker, Fridge and Sink

Aft drop down Shade Awning including 4 additional panels to join to stainless deck rail

Bow sun pad with cushions and convertible zippered triangle pillow back supports

Port and Stb Fuel Gauges at fill stations

### **Flybridge**

Non-skid flybridge cambered deck with ample drainage

Three windscreens with Windscreen Wiper

Sea Crylic flybridge enclosure, including additional flybridge stairway rain enclosure

Infinity Carpet on Flybridge floor

Navigation lights

Wet bar with sink, hot and cold water, pull put trash/recycle drawer

Dometic fridge

Indirect lighting under bar counter

3 swivel upholstered stools, fixed floor mount  
 Luxurious corner lounge seating with Sunbrella upholstery and storage covers  
 Large high gloss adjustable high/low, in/out dining table  
 Helm station with stainless wheel Stidd helm chair  
 Instrument consul with engine controls, chart plotters instrument monitors and panels, fuel tank monitoring system Windlass remote control Remote controls for spot light and ship's horn Bilge pump monitors and controls 5" Compass Comfortable stairs from cockpit for access to aft deck with stainless handrails Hard top with lights Hardtop reinforced for instruments to be mounted on top  
 E1000 Hydraulic crane for tender on flybridge, with wireless remote  
 Storage covers for seating and console  
 Sonos stereo system with marine speakers  
 Dockmate Remote Controller  
 Aft Module with BBQ  
 Air Conditioning on Flybridge  
 Lay Flat Lounger with Sunbrella upholstery on Stb Bench Seat with Sunbrella upholstery to port  
 Centerline Hatch in Hardtop above Helm chair  
 Cell Internet

### **Engine Propulsion & Steering System**

Twin Cummins QSM-11 705HP engines  
 Dual Racor filters in each engine room  
 Stainless shafts with 5 blade Veem propellers Upgraded 2021  
 Bronze P bracket Shaft and rudders with maintenance free Tides seals  
 Stainless rudder with zinc plates Power Steering system  
 Side Power Bow Thruster and Stern Thruster

### **Engine Room and Equipment**

Sound and heat insulated compartments  
 Ventilation system with moisture eliminators  
 17.5Kw(60Hz) Onan generator with sound shield and air water separator approx. 2200hrs Engine access through deck hatches in cockpit floor  
 4 x FLIR cameras in Engine rooms  
 Automatic fire extinguishers  
 Bow and Stern Thrusters  
 High water bilge pumps with alarms  
 Oil change pump system for engines and generator  
 Seawater Pro RO watermaker 40gph  
 Reverso Fuel Polishing System.  
 Glendenning Shore system with 70ft cord  
 Portable fire extinguishers  
 Fuel transfer pumps  
 Air conditioning compressors and cooling pump  
 AC and DC distribution panels  
 High volume AC fresh water pump  
 High volume DC fresh water pump Electrical outlets and lights

### **Electrical system**

110V or 220V electrical supply from generator/ shore power  
 50 Amp Shore power connector  
 Selector switch for AC power supply  
 Color-coded wiring for easy identification  
 Premium DC distribution board with switches, voltmeter and amp meter  
 Remote panel for generator

DC24V 1200 Amp/Hr Victron Lithium Phosphate Batteries running entire Ship Systems  
Dual 8000w Victron Quattro Inverters  
Fresh, black water & diesel tank gauges  
Separate Port and Stb Engine start batteries  
6 x Solar Panels on Hardtop  
High Output 200 Amp Alternators with Wakespeed regulators on Main engines for Lithium System  
Outlets in Salon / bar / galley / cabins /fly-bridge / aft deck / engine room

### **Plumbing System**

Headhunter Electric fresh water flush toilets  
Washer and separate dryer including laundry cabinets and iron board  
40 Gal holding tanks (2), Y valve for automatic discharge or dock side pump out  
300 Gal Water tanks  
Water and black tank integral to hull Color coded piping for easy identification  
High water bilge alarm 6x electric 24V bilge pumps  
Marine grade lines for fresh water system Fresh water tank monitoring system  
110V 30 Gal hot water heater

### **Interior Layout - Salon**

Hi-Lo In-Out Hi Gloss eucalyptus coffee/dining table with storage drawers  
Tempered tinted safety glass windows  
luxurious corner salon sofa with two storage ottomans  
Additional storage beneath sofa  
Large, contemporary art piece behind couch with ceiling accent lighting  
Soft furnishings including Silhouette blinds and solid luxury Swiss Oak custom cabinetry  
Padded fabric headliner with recessed down lights  
Window valance with Roman Blinds  
Side table with storage drawers  
Three top load deep pantry storage cabinets behind sofa  
48" flat screen TV with Sonos surround sound, and Apple TV

### **Interior Layout – 3 Cabin Owners Version**

#### **Master Stateroom**

Wood Style flooring with accent border throughout.  
Soft furnishings including blinds on all windows, Electric on side panels  
Luxurious custom carpentry  
King size walk around lift up bed with cavernous storage beneath  
Reading lights, cabin lights, wall sconce lights  
High gloss custom eucalyptus top-opening night stands with outlets/USB charging and storage drawer  
Padded fabric Headliner with recessed down lights  
Large make up vanity with lights and upholstered stool  
Large cedar lined closets for linens / towels and clothes  
180 degree views through wrap around, tinted and tempered windows with Blinds  
Sound insulated bulkheads  
En-suite Bathroom  
Blind over large window X-Large basin with rainfall faucet,  
Polarstone counters, custom glass wall tiles, eucalyptus lower cabinets, mirrored upper cabinets and laundry hamper,  
ventilation fan  
Luxury walk-in separate shower with custom glass tiled elliptical inlay  
Separate toilet with basin, storage cabinets and ventilation fan  
Large dressing area with full height cedar lined closets.

Full length mirror on reverse of door. Luxurious custom carpentry

### **VIP Cabin**

Queen size bed – semi walk around, storage below bed  
Soft furnishings including roman blind over large window  
Luxurious custom carpentry  
Luxury mattress  
Reading lights, wall sconces and cabin lights  
Opening hatch above bed  
Night stands with cupboard, light switches and outlets  
Vanity with mirror, (storage below) and upholstered stool  
Hanging closet, cedar lined  
Fabric headliner with recessed down lights  
En-suite bathroom with walk-in shower, head, basin and ventilation fan  
Opening port-lights for natural light and ventilation  
22" TV with Apple TV

### **Guest Cabin**

Twin beds convertible to king with center insert  
Soft furnishings including roman blind over port light  
Luxurious custom carpentry  
Luxury mattresses and bedding  
Reading lights, cabin lights  
Opening outboard portlight  
Night stand with drawers, light switches and outlets  
Fabric headliner with recessed down lights  
En-suite bathroom doubles as day head with walk-in shower, head and basin  
Opening port-light for natural light and ventilation, c/w with Roman blind  
Custom integrated sliding privacy door/wall to join cabin with head and open space  
Smoked glass wall mirrors and inboard bookcase storage  
Hanging cedar lined closet and storage cabinets

### **Galley**

Polarstone quartz counter tops and back splash  
Built in wall mount Samsung Microwave/convection oven  
Dacor - 5 burner Propane cook top  
Miele Full oven  
Breakfast bar, including four floor-mounted upholstered swivel stools  
Roll top corner appliance garage  
Fisher Paykel - Dish washer drawer  
Miele Panel ready dual door refrigerator with twin freezer drawers & Ice maker  
Summit Wine Cooler  
Cutlery & crockery drawers Pot drawer, spice cupboard, pull out oil/condiment drawer Additional storage drawers and large pantry cupboards Double sinks with garbage disposal Under counter trash drawer  
Luxurious custom carpentry  
High gloss eucalyptus liquor buffet/bar/storage cabinet  
Custom roll out stemware storage with glass door  
Luxurious custom carpentry

### **Navigation & Instrumentation**

2x Garmin 8616 16" touch screen chart plotters with GPS antennas  
48 Mile HD Radar  
Auto pilot, Depth and speed transducers



VHF on flybridge and interior navigation station and master cabin  
AIS 800  
Dockmate Remote Yacht Controller  
Fixed mount Flir night vision 2023

### Extra Equipment

Venture 14 Tender complete with:

- 70 H.P. Yamaha
- Underwater LED blue lights
- Courtesy blue floor light
- Swim ladder
- Ski tow bar
- 4 rod holders
- Optional 5th seat
- Hydronic steering
- Wash down tank and pump
- Garmin Chart-plotter
- Standard Horizon VHF
- Aluminum trailer

Other:

- 6 x 380w Solar Panels

Exclusions

Aft deck chairs x 6

## AT ANCHOR 2



## SUN LOUNGER 2





## AFT DECK 1



## AFT DECK 2



### AFT DECK 3

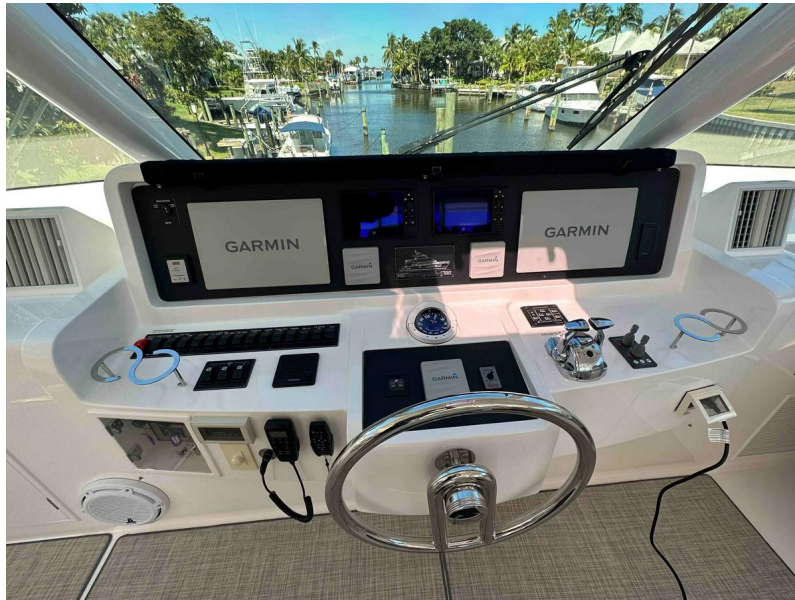


### FLYBRIDGE 1





## HELM 1



## FLYBRIDGE DINING



### FLYBRIDGE BAR



### FLYBRIDGE LOUNGER





## VENTURE 14 TENDER



## SALON 1





## SALON 2



## SALON 3



## GALLEY 1



## GALLEY STORAGE

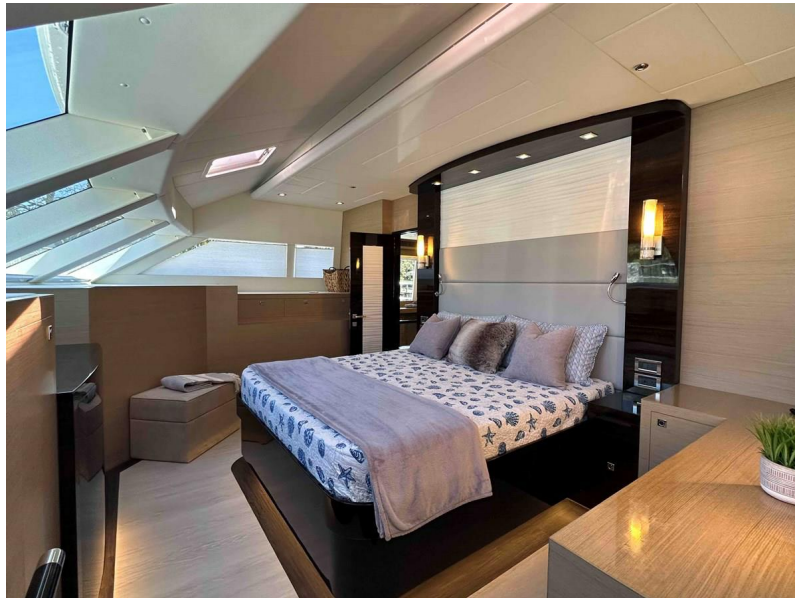




## GALLEY QUARTZ



## MASTER CABIN 1



## MASTER CABIN 2



## MASTER BATHROOM



## VIP PASSAGE



## VIP QUEEN





## VIP BATHROOM



## PORT TWIN



**PORT TWIN LOOKING AFT**



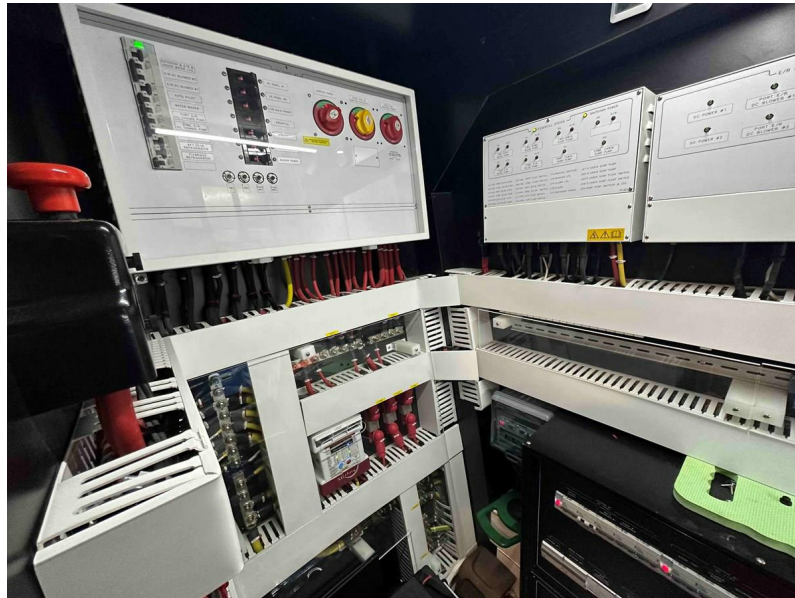
**STB CABIN WORK BENCH**



## STB CABIN FREEZER



## ELECTRICAL ROOM 2






## ELECTRICAL PANEL



Generated On 3/12/2023 9:03 AM by Richard Ford

Proud Member of 

**The Powercat Company LLC**  
2525 Marina Bay Drive West  
Suite 202  
Fort Lauderdale Florida  
33312 United States

**Richard Ford**  
P: 9548038102  
M: 954 803 8102  
richard@powercatco.com  
www.horizonpowercatamarans.com


**FRUITION**

Page 22 of 26

## LAYOUT\_PROFILE



Generated On 3/12/2023 9:03 AM by Richard Ford

Proud Member of  YATCO

**The Powercat Company LLC**  
2525 Marina Bay Drive West  
Suite 202  
Fort Lauderdale Florida  
33312 United States

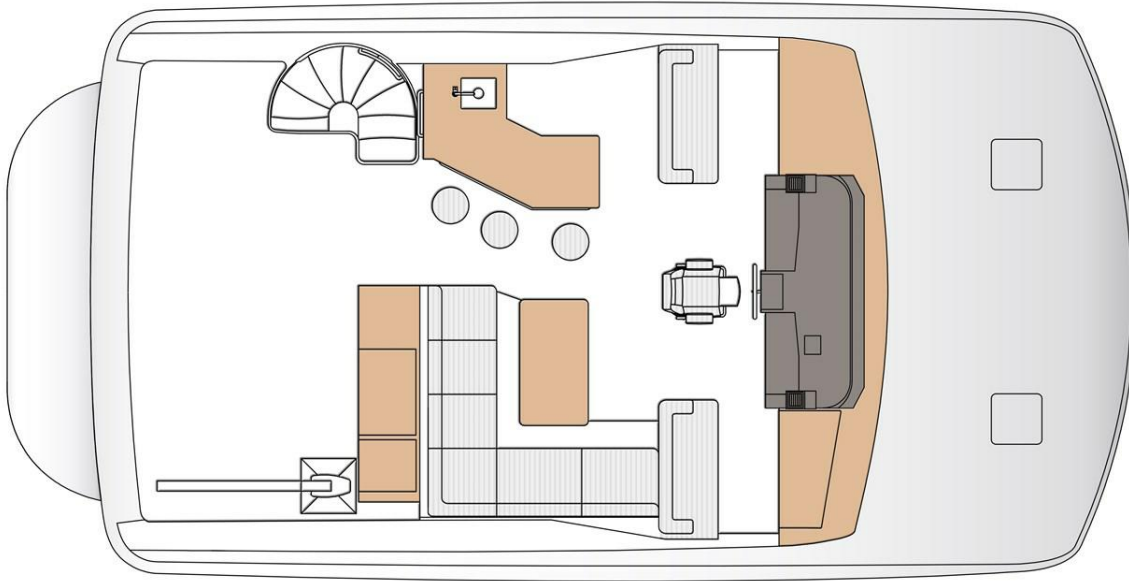
**Richard Ford**  
P: 9548038102  
M: 954 803 8102  
richard@powercatco.com  
[www.horizonpowercatamarans.com](http://www.horizonpowercatamarans.com)

**FRUITION**

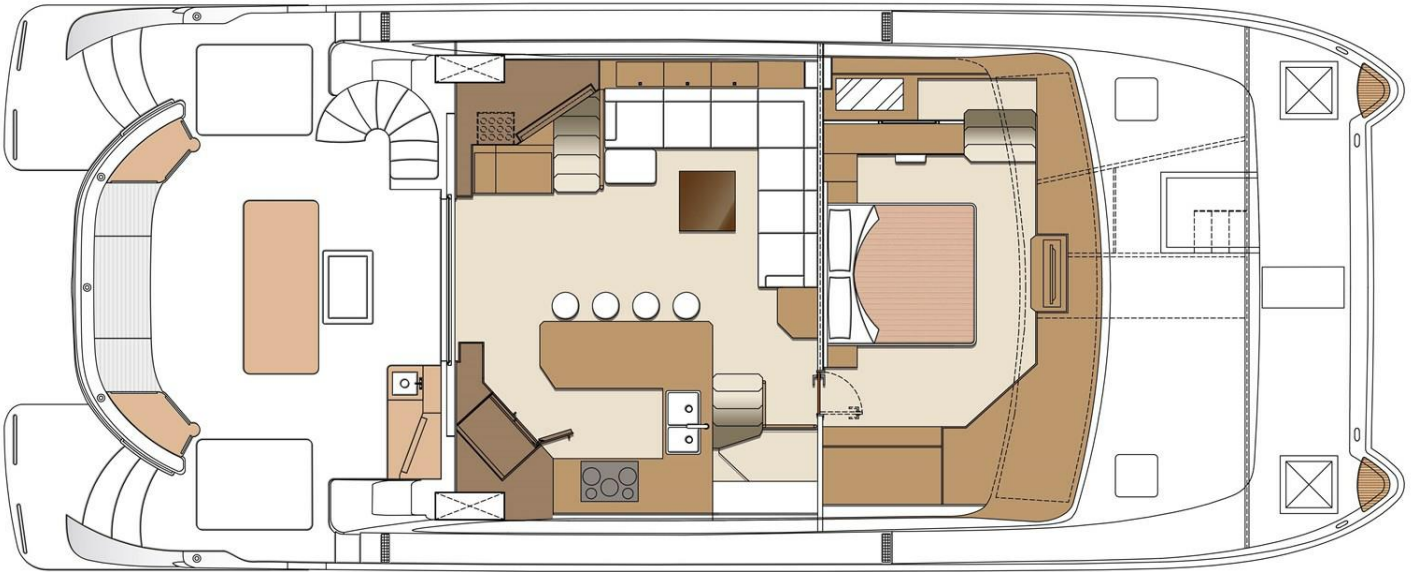
Page 23 of 26




## LAYOUT\_FLYBRIDGE



## LAYOUT MAIN DECK



Generated On 3/12/2023 9:03 AM by Richard Ford

Proud Member of 

**The Powercat Company LLC**  
2525 Marina Bay Drive West  
Suite 202  
Fort Lauderdale Florida  
33312 United States

**Richard Ford**  
P: 9548038102  
M: 954 803 8102  
richard@powercatco.com  
www.horizonpowercatamarans.com

**FRUITION**

Page 25 of 26

## LAYOUT LOWER DECK

