



**HORIZON**  
POWER CATAMARANS



## **HORIZON PC74 CATAMARAN MOTOR YACHT**

**L.O.A.:** 73' 9 1/2" (22.49m)  
**Beam :** 28' 3 3/4" (8.63m)  
**Draft (half load) :** 5' 11"  
**Displacement (half load) :** 74 tons  
**Fuel :** 2,000 US gal.  
**Fresh Water :** 400 US gallons  
**Engine :** 2x CAT C18 ACERT 1136HP  
**Generator :** 1x 29Kw(60Hz) plus  
1x 13,5KW(60Hz)

# The new benchmark in Luxury







## HORIZON PC74 CATAMARAN MOTOR YACHT

### SPECIFICATIONS

#### HULL AND MAIN STRUCTURE:

ABS/DNV type approval fiber / resin & sandwich core material applied  
White gelcoat finish for hull above water line, exterior decks and furniture.

One piece hull SCRIPSTM cored lamination w/deep skeg and longitudinal girders.

Hull, Deck & superstructure are built with licensed process SCRIPSTM for improved strength and less weight

High-density foam cored hull bottom.

High-density Divinycell or equivalent foam cored hull sides, decks and superstructure.

Stringers with high density foam coring.

Interior structural components all properly bonded to hull.

Strong collision bulkhead structure for extra safety.

International anti-fouling bottom paint, w/ anti-osmosis treatment.

Prop Speed/Prop Gold metal paint for underwater appendages

Tunnels for reduced draft.

#### EXTERIOR DECK AND EQUIPMENTS:

Gunwale with external rub rail.

Fiberglass cap rail.

Mooring cleats, with hawse pipes in gunwale.

Locker for 1 x 24V anchor windlass with foot switches.

Anchor control at fly bridge.

Roller and S/S chain stopper for one anchor.

2018 V1

Heavy-duty S/S handrail. Top rail 1 1/2",

Stanchions 1 1/4", and mid rail 1".

S/S flag pole on bow rail.

Pulpit seats at bow.

Deck hatch for access to 1x 100kg S/S anchor.

1x 200 ft of high tensile 1/2" chain plus 100ft mooring rope.

Fresh water at chain locker.

Bow storage lockers(x2) with access through flush deck hatches.

Large fwd deck hatches for storage with nonskid strips inside.

Opening port lights (x6).

Hull side frameless and flush mounted windows(x2) in tinted and tempered glass.

Deck hatches(x2) with blinds & screens.

Stainless steel framed salon door.

Port and starboard sides boarding door. (USA Only)

Non-skid deck.

Aft deck engine control station.

Self draining aft deck.

FRP Curved seat with cushions.

Large solid satin finished wood cockpit table.

Large curved stair at port and stbd stern down to dive/swim platforms.

Manual swim ladder(x1).

Cockpit lockers for storage.

Cockpit down LED lights.

Courtesy lights.

Hot and cold fresh water shower(x1) recessed into aft coaming.

Fresh water deck wash tap and dock inlet at portside.

Canvas covers for helm console, STD helm chair, FRP lounging seating & table, BBQ on the Flybridge, aft cockpit seating, and special padded cover for aft cockpit table.

Comfortable stairway with treads up to

Flybridge from aft deck.

Recessed fuel and water inlets.

#### FLYBRIDGE AND BOAT DECK FLYBRIDGE:

Non-skid Flybridge cambered deck with ample drainage.

Navigation LED lights.

Ample locker space for storage.

Wet bar with sink, hot and cold water, and fridge.

Indirect lighting under bar counter.

Coffee table

Wet day head.

Helm station with S/S wheel.

Stidd pilot chairs x2

2x bench seats (port and starboard). Starboard to convert into sunning bed.

Instrument console with engine controls, chart plotter instrument monitors and panels, fuel tank monitoring system.

Windlass remote control.

Remote controls for lights and ship's horn.

Bilge pump monitors and controls.

Compass.

Hard top with lights.

Hardtop reinforced for NAV electronic antennas to be mounted on top.

1500lb hydraulic crane.

S/S Flag pole at stern. 2018 V1

#### ENGINE PROPULSION & STEERING SYSTEM

CAT C1&A 1136HP engines.

Dual Racor filters in each engine room.

S/S shafts AQUAMET HS 22# or equivalent.

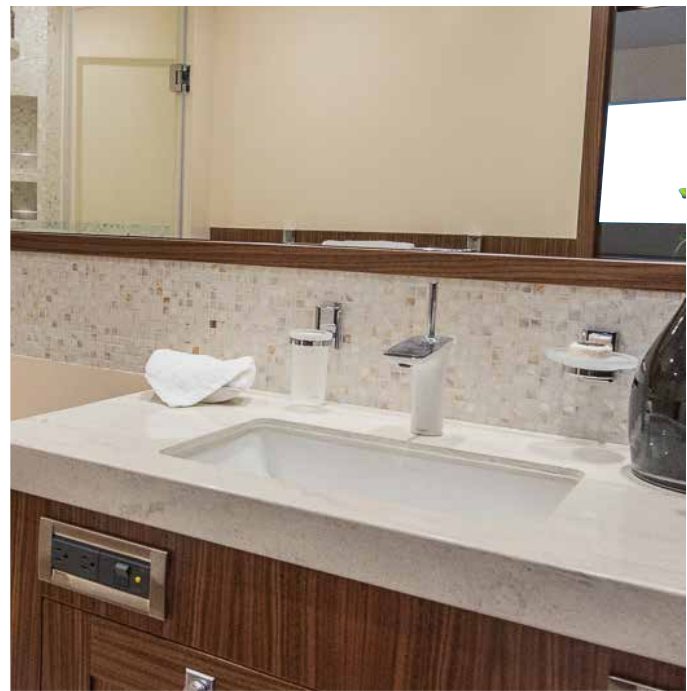
High performance S class 4 blade propellers in NiAlBr.

Bronze P bracket.

HORIZON PC74 CATAMARAN MOTOR YACHT

Shaft and rudder packing glands with

maintenance free Tides seals.



Stainless rudder with zinc plates.  
Power Steering system.  
Bennett or equivalent heavy-duty S/S trim tabs with indicators.  
Underwater exhaust system with bypass and mufflers.

### ENGINE ROOM AND EQUIPMENT

Sound and heat insulated compartments.  
Ventilation system with moisture eliminators.  
Onan generator 29Kw(60Hz) and 13.5KW(60HZ) with sound shield and exhaust/water separator.  
Engine access through deck hatches in aft deck.  
DC Lights.  
Automatic fixed fire extinguishers.  
Two oil change pump system for engines gears, and generators.  
4 ton chilled water air conditioning compressors(x3) and circulation pump.

### UTILITY ROOM / ENGINE ROOM

Portable fire extinguishers (x6).  
Fuel transfer pump (x1).  
AC and DC distribution panels.  
High volume AC fresh water pump (x1).  
Electrical outlets and lights.

### ELECTRICAL SYSTEM

110V or 220V electrical supply from generator/ shore power.  
100 Amp Shore power connector.  
Automatic transform switches for AC power supply.  
Color-coded wiring for easy identification.  
Premium DC distribution board with switches, voltmeter and amp meter.  
Remote panel for generators.  
Four 255Ah AGM batteries for ship's DC 24V service power.

Premium AC panel with switches 110V or 220V AC, 50Amp dock inlet with cable master.  
Fresh, black water & diesel tank gauges.  
Four 210Ah (12V) AGM start batteries for engines/ generator, plus one 80Ah battery for 13.5 kW generator.  
Battery chargers or inverter/chargers.  
Vimar switches for lighting switches and receptacles.  
Outlets in Salon / bar / galley / cabins /flybridge / aft deck / engine room. 2018 V1

### NAVIGATION & INSTRUMENTATION

Garmin GPS.  
Garmin 48" 4kW 72nm open array radar system.  
Garmin 15.5" (x2) multifunction displays.  
Garmin Autopilot System.  
Garmin Wind/Speed/Temp/Depth transducers.  
Garmin VHF at flybridge(with built-in Loudhailer) and at interior navigation station.  
Garmin AIS.

### MECHANICAL SYSTEM

Headhunter toilets.  
Washer and separate dryer.  
80 Gal black water holding tanks(x2), Y valve for overboard discharge or dock side pump out.  
400 Gal fresh Water tank.  
Fresh water and black water tank integral to hull.  
Color coded piping for easy identification.  
Electric 24V bilge pumps(x6) with high bilge water level alarm.  
Manual bilge pump per engine room.  
Marine grade lines for fresh water system.  
Two 30 Gal hot water heaters.  
Hot water circulation pump.

### INTERIOR DESIGN AND EQUIPMENT

#### INTERIOR LAYOUT – SALON

Plush wool carpeting or hardwood flooring.  
Tempered safety glass windows.  
Luxurious salon sofa covered in leather or fabric.  
Soft furnishings including roman blinds.  
Fabric headliner with recessed down lights.  
Window valances.  
Dining table.  
Satin wood finish on vertical and horizontal surface. Wood selection from shipyard standard collection.  
LED Ceiling lights.

#### MASTER STATEROOM

Carpeted or wood flooring.  
Manual blinds for front windows.  
Soft furnishings including blinds on all side windows.  
King size walk around bed with 10" pocket spring mattress.  
Reading lights and cabin lights.  
Night stands with cupboard, light switches and outlets.  
Headliner with recessed down lights.  
Built in sofa  
Vanity with a stool and mirror.  
Large closets for linens / towels and clothes.  
180 deg views through wrap around, tinted and tempered windows.  
Sound insulated bulkheads.

#### MASTER STATEROOM – ENSUITE BATHROOM

1x Head, walk-in shower and double basin— behind Master bed  
Cabinets, overhead lockers, and mirrors.  
Two full height closets—cedar lined. 2018 V1

#### INTERIOR LAYOUT – VIP CABIN X2 FORWARD

King size bed—semi walk around.  
Carpeted or wood flooring.  
Soft furnishings including roman blind over large oval window.  
Luxury pocket spring mattress.  
Reading lights, cabin lights.



Night stands with cupboard, light switches and outlets.  
Closets cedar lined.  
Fabric headliner with recessed down lights.  
En-suite bathroom with walk-in shower, toilet and basin.  
Opening port lights for natural light and ventilation.

**INTERIOR LAYOUT – GUEST CABIN**

Twin beds.  
Carpeted or wood flooring.  
Soft furnishings including roman blind over port light.  
Luxury foam mattress.  
Reading lights, cabin lights.  
Opening port lights in hull side.  
Night stand with drawers, light switches and outlets.  
Fabric headliner with recessed down lights.  
En-suite bathroom with walk-in shower, toilet and basin.  
Opening port-lights for natural light and ventilation.

**CREW QUARTERS**

In accordance w/ layout plan – to include counter with sink and refrigerator, shared head and shower, hanging lockers, one single bunk, one captain's cabin, storage lockers, A/C.  
Satin finish wood on walls, vinyl ceiling, vinyl floor, Corian or equivalent countertop and floor in head, head hardware in Justime collection or equivalent. All materials for interior fitout are from shipyard standard choices.  
Access via aft deck.

**SALOON BAR**

Corian or wood bar counter.  
Storage cupboards.  
Recessed overhead lights.

**GALLEY**

Corian counter tops and splash backs.  
GE 4 burner cook top - electric  
GE microwave/convection oven.

GE Dish washer.  
GE stainless steel refrigerator with freezer.  
Cutlery & crockery drawers.  
Pot drawer if owner supply & spice cupboard.  
Additional storage drawers and cupboards.  
Double sinks with garbage disposal.  
Under counter trash drawer.

**TELEPHONE AND STEREO SYSTEM**

WiFi wireless routers onboard.  
Flybridge Fusion Marine Stereo(x1) and speakers(x4).  
Saloon 60" LCD TV with BOSE Lifestyle Home Entertainment System. 2018 V1 and separated Blu-ray disc player.  
Aft deck Fusion Marine Stereo(x1) and speakers(x4).  
Master cabin 40" LCD TV with Fusion Marine Stereo(x1) and SM speakers(x2).  
VIP cabins 32" LCD TV with Fusion Marine Stereo(x1) and SM speakers(x2).

**ADDITIONAL ITEMS**

**EXTERIOR DECK AND EQUIPMENT:**  
Hi Gloss AftDeck Table with Sun Burst pattern  
100Amp Cablemaster  
Additional Swim Ladder on Port Stern  
Additional Hot & Cold Shower in port Swim platform locker  
LED boat name on stern.  
Chain counter  
Teak Decks - After deck and steps with white caulking  
FRP aft deck bar with basin, fridge and icemaker and overhead locker  
Exterior 32" TV on Aft deck  
Underwater Lights (6)  
Corian counter top on Aft Deck Bar  
Hi/Lo Tenderlift platform  
Ultra-sonic antifouling system  
Storage lockers for 12 dive tanks (4x aft deck hatch, 2x4 both side platform step)  
Pop up cleats for dinghy on swim platform

Burnewinn Rod holders x2  
**FLYBRIDGE AND BOAT DECK:**  
Propane BBQ with Hi/Lo lift and cabinet  
Corian counter tops on bar counters  
S/S rails around boat deck  
3 X Hatch on hardtop  
Air conditioning on flybridge X 4 Blowers  
40" TV with recess box  
Second Dryer fitted at bar  
2 Dometic freezers. (at bar and under sunbed)  
Scottsman ice maker  
Two side windshields with washer and wiper  
**ELECTRONICS & INSTRUMENTATION:**  
See separate upgrade list  
**ENGINE PROPULSION AND STEERING SYSTEM:**  
SPUR line cutters for shafts  
Bow thruster(x1)  
**ELECTRICAL SYSTEMS:**  
Stern docking lights(x2)  
ISO Boost transformer  
**MECHANICAL SYSTEMS:**  
Reverso FPS210 fuel polishing system  
Dive compressor (Bauer Junior II) with air outlet and on/off box  
Back-up fresh water pump  
Sea Recovery - Water maker 1400gal.day with extra remote control  
Headhunter sewage treatment system  
Additional Aft deck control station with thruster control and fuel guages on both stations

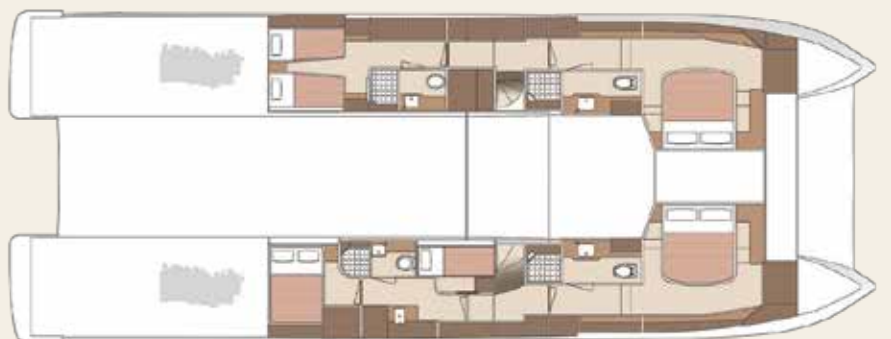
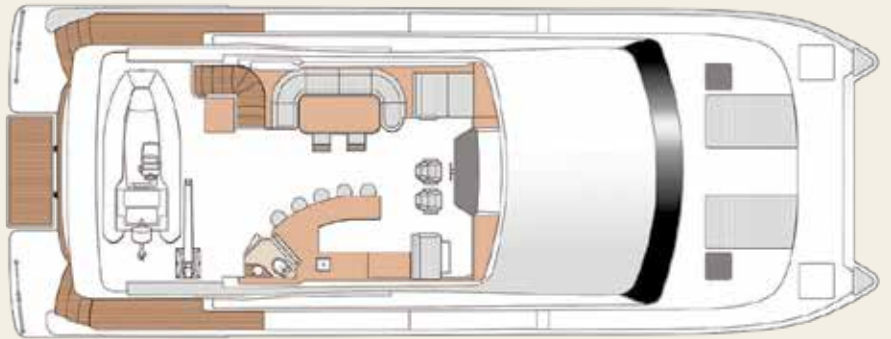
*Qualifications and Notice to Reader: Not included are pieces of free standing furniture and lamps, special designer specified lighting, art work, cooking utensils, cutlery and flatware, soft goods and the design fees attendant to personalizing the Owners interior arrangement plan and design. Performance statistics, weight, draft, freeboard and height are estimated only and are not warranted, and actual figures will vary depending on tolerances achieved during the vessels construction process and the equipment, supplies and stores on board, as well as operational and sea conditions. Horizon reserves the right to substitute equipment and materials stated herein to others which it believes to be of equal or superior quality and to make such design and dimensional changes as it believes are necessary to improve the vessel's performance and function. Special treatment of interior fit-out and/or use of non-standard soft furnishings required by the purchaser may subject to additional charge.*

*All specifications are subject to change without notice.*



# PC74

Price upon request



## HORIZON STRENGTH BY THE NUMBERS

- 1 and only SYBAss member in Asia
- 790 Luxury yachts delivered worldwide
- Top 10 largest yacht builder in the world, 5 years running
- 30 Years as a luxury yacht builder
- 8 Yacht series with over 20 models
- Sales and support in 5 continents
- Only top 5 custom luxury yacht builder in Asia Pacific
- 4 Shipyards over 110,000 sqm. of land

[INFO@HORIZONCATAMARANS.COM](mailto:INFO@HORIZONCATAMARANS.COM)

[WWW.HORIZONCATAMARANS.COM](http://WWW.HORIZONCATAMARANS.COM)